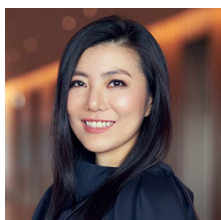




EUROPEAN REAL ESTATE SUMMIT



Jaelle Ang
CEO
The Great Room

Jaelle Ang is the CEO and Co-Founder of The Great Room - the Asia-Pacific arm of the highest rated global co-working operator, Industrious. The group's partners spans from world class developers to investment funds including Swire Properties, Hutchinson, Mitsui Fudosan, Pontiac Land, Blackstone and Brookfield.

Passionate about conservation and sustainability, she has been driving adaptive reuse of iconic heritage buildings such as the highly profiled Raffles Hotel and Eu Yan Sang Building in Singapore.

Prior to The Great Room, she headed real estate development at SET-listed company, Country Group Development Public Company Limited in Thailand, including one of the largest mixed-use development in Bangkok, consisting of the Four Seasons Hotel, Four Seasons Residences and Capella Hotel. She read Architecture at the Bartlett School of Architecture in London and then completed her MBA in Imperial College, London.

Outside of her immediate responsibilities, She is on the board of Country Group Development PCL and United Hampshire REIT. In addition, she is also Forbes Asia's Power Business Women 2019 and Prestige Women of Power 2022.

www.dlapiperresummit.com/international

© 2024 DLA Piper. DLA Piper is a global law firm operating through various separate and distinct legal entities. Further details of these entities can be found at www.dlapiper.com. All rights reserved. Attorney advertising.